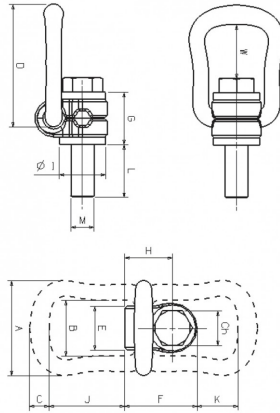
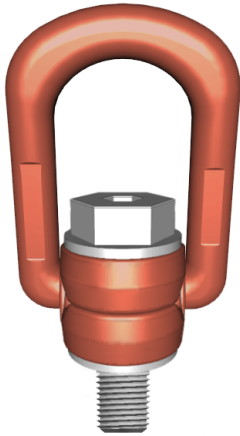


Grade 10 Swivel Eyebolt with Clamp – G10SHR



Grade 10 Swivel Eyebolt with Clamp – G10SHR

- Grade 10 Alloy Steel.
- Pink painted finish, RAL 3022.
- Designed, tested & certified in compliance with the technical directives GS-OA15-04 – EN 1677.
- Minimum breaking load is 4 times the W.L.L.
- Coefficient 4 in all loading directions.
- Suitable for safe lifting in compliance with the machinery directive 2006/42/EC
- Tested at 100% magnaflux.
- Tested at 20.000 stress cycles.
- Non standard threading and stem length upon request.
- Can be oriented at 360°.
- The screw is protected with the GEOMET system which guarantees lasting protection in time.
- Captive screws
- Eyebolts screws size M36 or bigger have been realised also to hexagonal universal spanners.
- Full CAD support available upon request.
- Certification available **2.1 EC**

CARTEC

Model: 806X

Product Code	Dia	Length	W.L.L	A	B	C	D	E	F	G
	mm	mm	t	mm	mm	mm	mm	mm	mm	mm
G10SHR80.3	M8	15	0.3	57	34	10	78	24	41	30

Product Code	Dia	Length	W.L.L	A	B	C	D	E	F	G
	mm	mm	t	mm	mm	mm	mm	mm	mm	mm
G10SHR100.63	M10	15	0.63	57	34	10	78	24	41	30
G10SHR121	M12	23	1	66	38	13.5	85	30	50	36
G10SHR161.5	M16	24	1.5	66	38	13.5	85	30	50	36
G10SHR202.5	M20	31	2.5	87	55	16	111	48	68	44
G10SHR244	M24	37	4	87	55	16	111	48	68	44
G10SHR305	M30	45	5	109	66	22.5	145	54	91	65
G10SHR367	M36	50	7	109	66	22.5	145	54	91	55
G10SHR368	M36	59	8	109	78	28	190	62	108	81
G10SHR4210	M42	75	10	136	78	28	190	62	108	75
G10SHR4215	M42	62	15	169	97	36	242	68	131	89
G10SHR4820	M48	71	20	169	97	36	242	68	131	89

Product Code	Dia	Length	H	I	L	W	J	K	CH	Weight
	mm	mm	mm	mm	mm	mm	mm	mm	mm	kgs / ea
G10SHR80.3	M8	15	26.5	25	15	43	51	35	13	0.275
G10SHR100.63	M10	15	26.5	25	15	42	51	35	17	0.29
G10SHR121	M12	23	33	32	23	40	52	28	19	0.50
G10SHR161.5	M16	24	33	32	24	38	52	28	24	0.51
G10SHR202.5	M20	31	42.5	45	31	54	71	36	30	1.25
G10SHR244	M24	37	42.5	45	37	51	71	36	36	1.30
G10SHR305	M30	45	58.5	60	45	62	86	47	46	3.25
G10SHR367	M36	50	58.5	60	50	60	86	43	55	3.30
G10SHR368	M36	59	72.5	70	59	88	115	74	55	5.90
G10SHR4210	M42	75	72.5	70	75	86	115	70	65	6.50
G10SHR4215	M42	62	87.5	85	63	121	151	97	65	11.20
G10SHR4820	M48	71	87.5	95	71	117	151	93	75	11.60