

Van Beest has a long history of manufacturing shackles. The Green Pin® production facility and warehouse are located in Sliedrecht, Holland, near the port of Rotterdam.

The Green Pin® forging facility is the most modern of its kind in the world. Investments such as robotizing and mechanization of processes assure sufficient production volumes and high quality. This is all done to supply you reliable Green Pin® shackles



**Green Pin®: a genuine made in Holland product.**



**YOUR RELIABLE PARTNER**





To ensure the high and steady quality of our Green Pin® products, Van Beest is certified according to the latest ISO norm, 9001: 2008. This high quality standard is implemented in all aspects of our organization, from the purchase of the raw material to the education of our staff and the quality inspections during the production process.

You can make sure you are using the original Green Pin® product by checking the marking on the body and pin of the shackle. The shackles are marked with the WLL, the steel grade, CE conformity sign and our manufacturer's code. Furthermore our products show a traceability code that enables us to trace any shackle back to the raw material and all the stages of the production process up until its final testing. Please make sure you use genuine Green Pin® products; after all, you would not want to find yourself risking lives and loads using a copy!



Member of **Van Beest International**

Manufacturer and supplier of wire rope and chain accessories, with offices in The Netherlands, Germany, France and the USA.

Registered trade name: Green Pin®

Your dealer: GPS Lifting Ltd  
e-mail: [sales@gpslifting.co.uk](mailto:sales@gpslifting.co.uk)  
[www.gpslifting.co.uk](http://www.gpslifting.co.uk)

## Green Pin® Standard Shackles

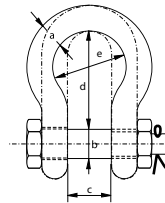
- Material** : bow and pin high tensile steel, Grade 6, quenched and tempered
- Safety Factor** : MBL equals 6 x WLL
- Standard** : EN 13889 and meets performance requirements of US Fed. Spec. RR-C-271  
DNV type approved to certification note 2.7-1
- Finish** : hot dipped galvanized
- Temperature Range** : -20°C up to +200°C
- Certification** : at no extra charges this product can be supplied with a works certificate, material certificate, manufacturer test certificate and/or EC Declaration of Conformity



G-4161



G-4151



G-4163

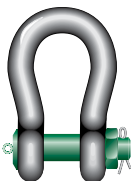


G-4153

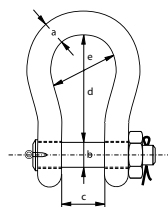
working load limit	diameter bow	diameter pin	width inside	length inside		width bow	weight each	
				dee type	bow type		screw pin	safety bolt
tons	a mm	b mm	c mm	d mm	d mm	e mm	kg	kg
0.33	5	6	9.5	19	22	16	0.02	--
0.5	7	8	12	22	29	20	0.05	0.06
0.75	9	10	13.5	26	32	22	0.10	0.11
1	10	11	17	32	36.5	26	0.14	0.16
1.5	11	13	19	37	43	29	0.19	0.22
2	13.5	16	22	43	51	32	0.36	0.42
3.25	16	19	27	51	64	43	0.63	0.74
4.75	19	22	31	59	76	51	1.01	1.18
6.5	22	25	36	73	83	58	1.50	1.77
8.5	25	28	43	85	95	68	2.21	2.58
9.5	28	32	47	90	108	75	3.16	3.66
12	32	35	51	94	115	83	4.31	4.91
13.5	35	38	57	115	133	92	5.55	6.54
17	38	42	60	127	146	99	7.43	8.19
25	45	50	74	149	178	126	12.84	14.22
35	50	57	83	171	197	138	18.15	19.85
42.5	57	65	95	190	222	160	26.29	28.33
55	65	70	105	203	260	180	37.6	39.59
85	75	83	127	229	329	190	--	62

## Green Pin® Heavy Duty Shackles

- Material** : bow and pin alloy steel, Grade 8, quenched and tempered
- Safety Factor** : MBL equals 5 x WLL
- Finish** : shackle bow painted silver, pin painted green (120 tons shackle is hot dipped galvanized)
- Certification** : at no extra charges this product can be supplied with a works certificate, material certificate, manufacturer test certificate, EC Declaration of Conformity and all shackles starting from 150 tons are supplied with a Lloyd's Register of Shipping Certificate on proof load
- Note** : + 5% forging tolerance on inside width and length



P-6036



working load limit	diameter bow	diameter pin	width inside	length inside	width bow	weight each
tons	a mm	b mm	c mm	d mm	e mm	kg
120	95	95	144	381	238	110
150	105	108	165	400	275	160
200	120	130	175	500	290	235
250	130	140	200	540	305	285
300	140	150	200	600	305	340
400	170	175	225	650	325	560
500	180	185	250	700	350	685
600	200	205	275	700	375	880
700	210	215	300	700	400	980
800	210	220	300	700	400	1100
900	220	230	320	700	420	1280
1000	240	240	340	700	420	1460
1250	260	270	360	750	450	1990
1500	280	290	360	800	450	2400