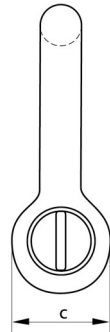
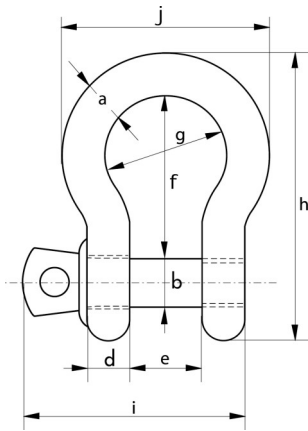


Green Pin® Bow Shackle G-4161

with Screw Pin



Material

Bow and pin high tensile steel, Grade 6, quenched and tempered

Safety Factor

MBL equals 6 x WLL

Standard

EN 13889 and meets performance requirements of US Fed Spec. RR-C-271 Type IVA Class 2, Grade A from 2 t and upward these shackles comply with ASME B30.26

Finish

Hot dipped galvanised

Temp Range

-40°c up to +200°c

Certification

As standard; EC Declaration of Conformity
Upon request; 2.1, 2.2, 3.1, MTC^a, CE, DNV 2.7-1 a*, DNV 2.7-1 b*, DNV 2.22 (*from 2t upwards)

WLL	Diameter Bow	Diameter Pin	Diameter Eye	Width Eye	Width Inside	Length Inside	Width Bow	Length	Length Bolt	Width	Product Code	Weight Each
t	a	b	c	d	e	f	g	h	i	j		kg
	mm	mm	mm	mm	mm	mm	mm	mm	mm	mm		
0.33	5	6	12	5	9.5	22	16	36	29.5	26	11001A	0.02
0.5	7	8	16.5	7	12	29	20	48.5	38	34	11002A	0.05
0.75	9	10	20	9	13.5	32	22	56	46.5	40	11003A	0.10
1	10	11	22.5	10	17	36.5	26	63.5	54	46	11004A	0.14
1.5	11	13	26.5	11	19	43	29	74	59.5	51	11005A	0.19
2	13.5	16	34	13	22	51	32	89	73	58	11006A	0.36
3.25	16	19	40	16	27	64	43	110	89	75	11007A	0.63
4.75	19	22	46	19	31	76	51	129	103	89	11008A	1.01
6.5	22	25	52	22	36	83	58	144	119	102	11009A	1.50
8.5	25	28	59	25	43	95	68	164	137	118	11010A	2.21
9.5	28	32	66	28	47	108	75	185	153	131	11011A	3.16
12	32	35	72	32	51	115	83	201	170	147	11012A	4.31
13.5	35	38	80	35	57	133	92	227	186	162	11013A	5.55
17	38	42	88	38	60	146	99	249	203	175	11014A	7.43
25	45	50	103	45	74	178	126	300	243	216	11015A	12.84
35	50	57	111	50	83	197	138	331	272	238	11016A	18.15
42.5	57	65	130	57	95	222	160	377	310	274	11017A	26.29
55	65	70	145	65	105	260	180	433	344	310	11018A	37.60