

Instruction Manual

Bulk Bag lifter



AR-P2000(Fixed)



AR-P1000/2000(Disassembled)

Note: The Owner/Operator must read carefully and understand all the information presented here before operation.

Rev : 0108

General Obligation:

The bag lifter shall be used, serviced and repaired according to the instructions of the manufacturer and shall not be modified without ensuring that the lifter is still safe.

The lifter should be used only by a person who is closely familiar with the work and has the theoretical and practical knowledge needed for safe use of structure, operation, uses, limitation, maintenance and inspection.

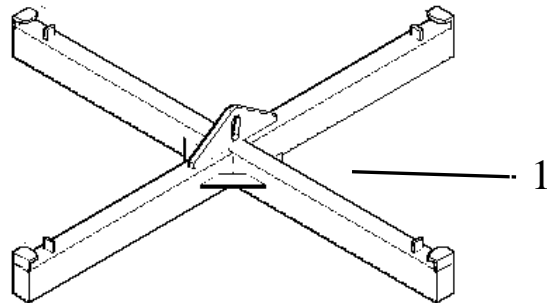
Note: *All of the information reported herein is based on data available as of the date of printing. The factory reserves the right to modify its own products at any time without notice. It is suggested to always verify possible updates to specifications before using.*

1.Specifications

Model	Capacity(KG)	Net Weight(KG)
AR-P2000(Fixed)	2000	65
AR-P1000(Disassembled)	1000	68
AR-P2000(Disassembled)	2000	72

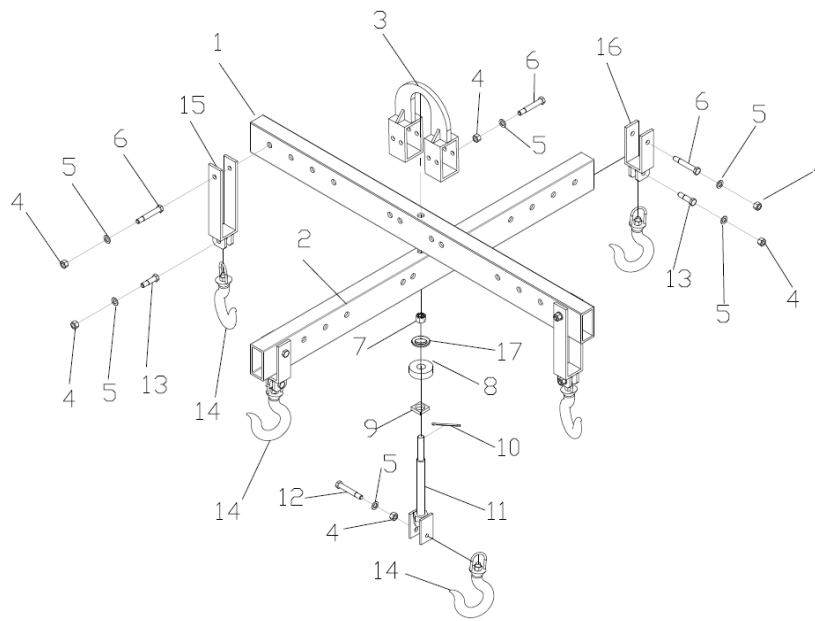
2. Exploded View & Part List

2.1 AR-P2000(Fixed)



NO	DESCRIPTION	QTY
1	Body	1

2.2 AR-P1000/2000(Disassembled)



No.	DESCRIPTION	QTY
1	Upper Beam	1
2	Bottom Beam	1
3	Top Hook	1
4	Nut	13

5	Washer	13
6	Screw	8
7	Nut	1
8	Washer	1
9	Washer	1
10	Pin	1
11	Screw	1
12	Screw	1
13	Screw	4
14	Hook	5
15	Upper Hook Frame	2
16	Bottom Hook Frame	2
17	Washer	1

3.Assembling Instruction (Disassembled):

3.1 Install the top hook onto the upper beam, and fix it with the #6 screws.



3.2 Put the upper beam on the bottom beam, and then put washers #17, #8 and #9 into the installation hole in turn from up to down. Fix the beams by screw #11.



3.3 Install the long hooks on the ends of the upper beam, short hooks on the bottom beam. Fix the two beams by screw #6, fasten the top hook by screw #13 and fix the center hook by screw #12.



4. Operation Instruction

- 4.1 Assemble the bulk bag lifter according to the Assembling Instruction.
- 4.2 Check every parts of bulk bag is in good condition.
- 4.3 Hang the bulk bag lifter through a hook or other fastener to work with a forklift or a crane or other equipment.
- 4.4 Pick a bag with a bulk bag lifter , make sure the safety latches of hooks of bulk bag lifter are workable.

5. Use Guide:

- 5.1 Don't stand under the lifter when using;
- 5.2 Don't use when exceeding the WLL;
- 5.3 The gravity of the bulk bag should be in the center of the lifter;
don't allow unbalance loading

6. Residual Risk

- 6.1 The load falling risk are varying with the bulk bag conditions, the value of the load, the condition of the hook, the condition of the beam. And the frequency of the load handling cycle should also be taken into account

7. Prohibited Uses

- 7.1 Do not use the lifter in applications where a risk of exceeding the rated capacity exists.
- 7.2 Do not tilt load on the lifter
- 7.3 Do not use the lifter to lift person.
- 7.4 Do not use the lifter with a forklift truck whose rated capacity is less than the bulk lifter.

8. Daily Maintenance and Regular Inspection

- 8.1 It is needed when work begins to check the shackles and bolts are fastened tightly. The lifter is in good condition without breakage.
- 8.2 It is needed to inspect once a month if the parts wear or tear. Change the defected parts in time.

无锡市汉尚机械有限公司 项目分工及责任人				
项目	子项目	责任人	项目指导人	审核人
产品技术				
说明书	文字部分编制	李南		陈林红
	产品操作, 安装说明, 使用注意事项 (中文)	李南		夏建伟
	爆炸图部分	李南		夏建伟
标签	总标签设计			
包装	参与工厂产品包装方案制定			
	参与工厂产品打托方案制定			
零件清单以及配件价格				
填表人:				
负责人:				
审核人:				
备注:	1. 商标的总设计 (一个产品需要哪些商标), 陆总作为项目指导 2. 产品包装方案的制定和打托方案的制定, 业务员参数讨论和审核			